

THE
TIME
IS NOW

SHLICHUT SUBCOMMITTEE

Board of Governors



הסוכנות היהודית
לארץ ישראל
THE JEWISH AGENCY
FOR ISRAEL

היחידה
שליחות חינוכית ציונית

Agenda

Opening Remarks

Diana Anderson, Shlichut Subcommittee Chair

Andrew Keene, Shlichut Subcommittee Deputy Chair

Trends and Needs of Small Communities around the World

Sam Robinson, Community Relations Manager, The Jewish Agency for Israel

Working with Strategic Partners

Adv. Yaron Shavit Deputy Chair of the Executive, The Jewish Agency for Israel

Growth Objectives in the Field of Shlichut

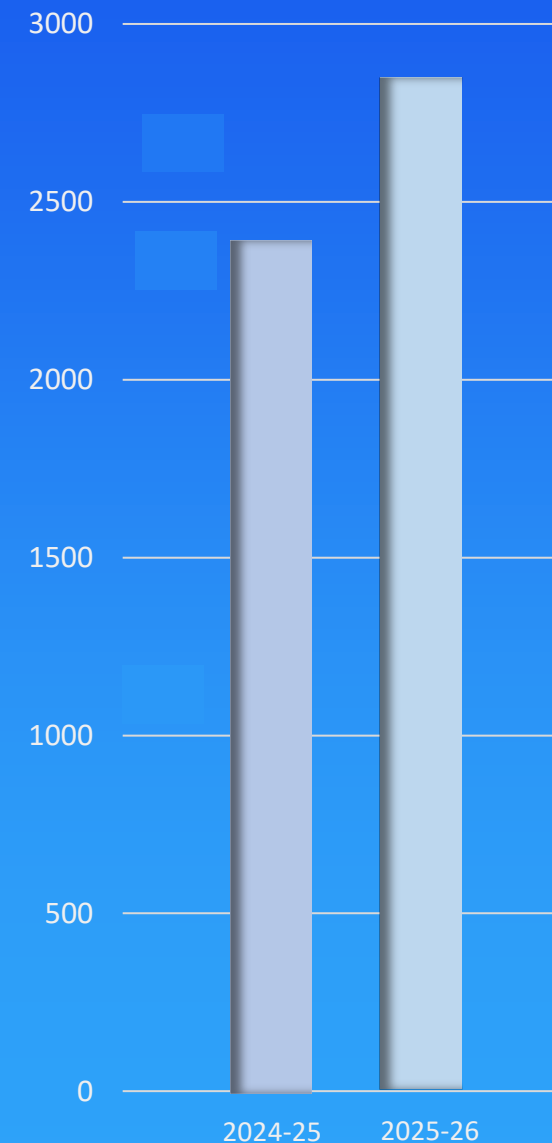
Hagar Shoham Marko, Director, Shlichut Unit, The Jewish Agency for Israel

Discussion Groups with Former ShinShinim

Closing Remarks



	2024-25	2025-26	Growth Rate
Israel Fellows	106	121	14%
Youth Movements	49	57	16%
Communities	96	111	15%
Regional Representatives	21	22	5%
Shinshinim	213	230	8%
Zionist Seminars	27	28	3.5%
Summer Camps	1565	1750	12%
RSJ	205	230	12%
Heftziba	33	50	51%
Shlichim Bemadim	87	120	38%
NEW – Short Term Shlichut	4	8	100%
TOTAL	2,406	2,727	13%



THE
**TIME
IS NOW**



2025 - 26

2,727
SHLICHIM

2,727

↑
+13%

2,406



2025-26
230

↑
+8%

213



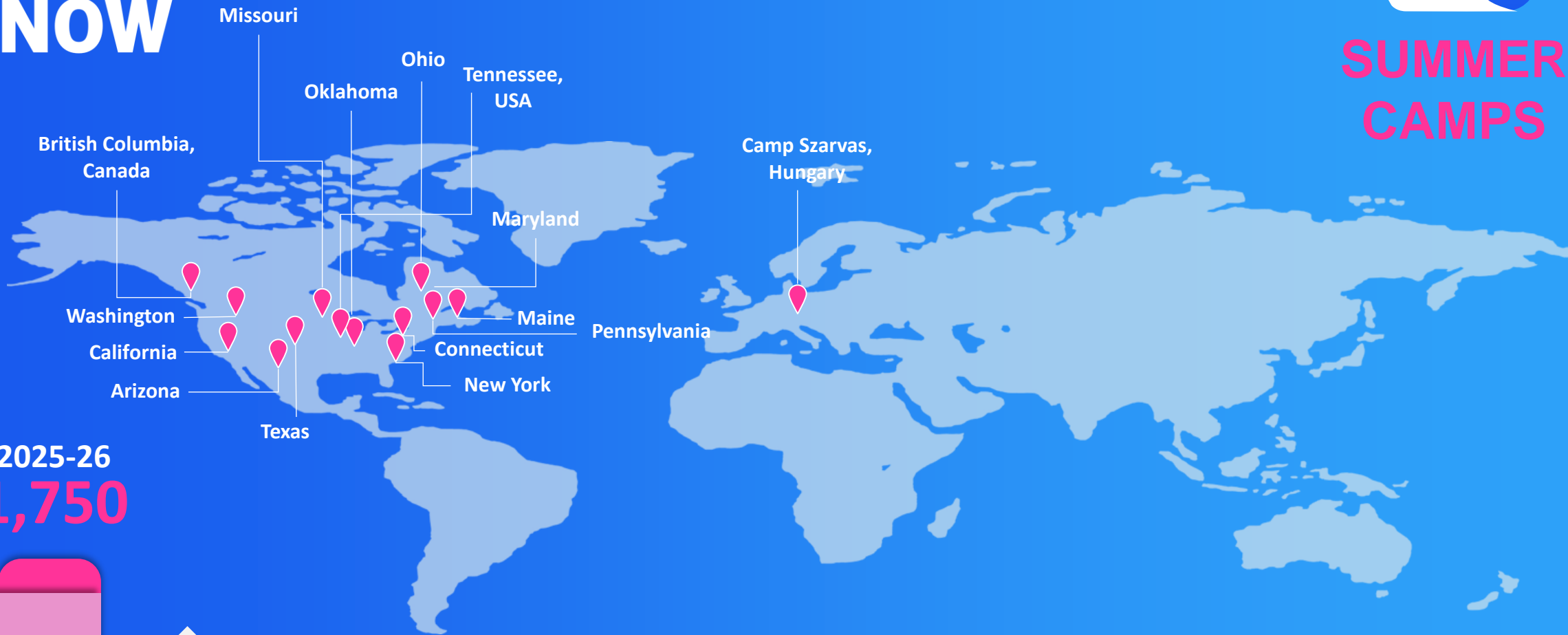
2025-26
111



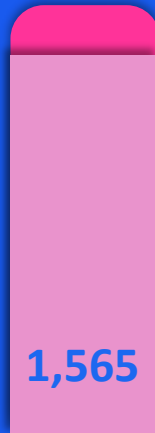
+15%



SUMMER CAMPS



2025-26
1,750



1,565

↑
+12%



2025-26
120



+38%

DISCUSSION

How can we reach more communities, particularly smaller ones?

*Where is there demand but a lack of resources,
and what new models can we introduce?*

Former ShinShinim:

Tal Gilboa - Connecticut

Ella Rosenthal - Cherry Hill

Arielle Lieberman - London

Roni Arendt - Budapest

THANK YOU



הסוכנות היהודית
לארץ ישראל
THE JEWISH AGENCY
FOR ISRAEL

היחידה
שליחות חינוכית ציונית

THE
TIME
IS
NOW